



精緻  
優雅

## Feminine Wiles

按照女戶主的喜好，單位的设计風格以輕柔優雅為主，偏向女性化，同時充滿裝飾性元素。設計師 Jacky 考慮過女戶主的喜好後，於淡灰及素白色為主調的设计加入女戶主心愛的粉紅色，整體視覺觀感柔和卻不減特色。Featuring a delicate pink and soft grey colour palette that adds an air of femininity, this 1,000 square foot apartment in Tai Kok Tsui's Central Park residential development is stunning.





1.



2.



3.

1. 除了花線筆直工整的線條以外，設計師亦希望在設計中加點新意思，因此他選用的傢具均是流線型，如客廳中的 Ligne Roset 經典梳化，以不同形態的線條碰撞出新鮮感。|| In the lounge, a pale grey contemporary Ligne Roset sofa sits on one side, illuminated by a sophisticated lighting scheme from Artemide.

2. 調整廳區格局後，設計師在天花及牆身都加入了花線設計，為一室奠定優雅感覺。|| The lady of the house took charge when it came to the style of the interiors, which explains the delicate pink colour palette with soft grey undertones.

3. 電視背牆鋪上海綿吸音牆紙，予牆身獨特的觸感；牆身橫跨客飯兩廳，中間隱藏了通往走廊的暗門。|| Clean yet inviting, a white dining table is flanked by four contemporary chairs covered in teal fabric, watched over by a series decorative plates from Fornasetti that hang on the wall.

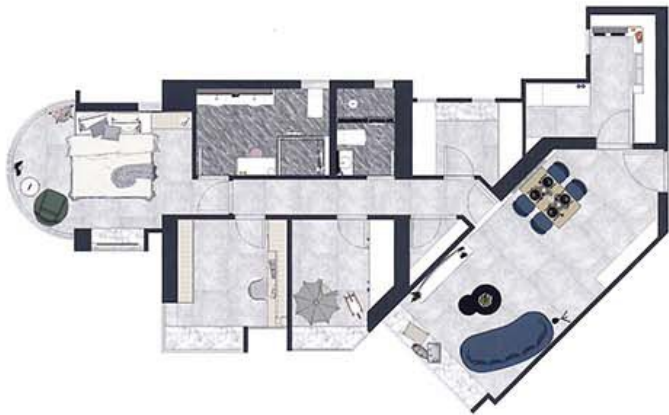
**設** 計師 Jacky 以簡約俐落的線條，構成富歐式風味的天花及牆身的花線設計，他更採用雲石、金鋼等高貴的材質，加上悉心搭配的軟裝，築成這柔和淡雅的三口之家。

#### 個性鮮明

客飯廳格局尚算四正，但入門處的角度有礙觀感。要修飾此部份，設計師 Jacky 沒有改動廳區間隔，反而從天花入手，加設樓頂式冷氣，嘗試以天花的線條調整廳區的觀感。調整廳區格局後，設計師在天花及牆身都加入了花線設計，為一室奠定優雅感覺。除了花線筆直工整的線條以外，設計師亦希望在設計中加點新意思，因此他選用的傢具均是流線型，如 Ligne Roset 經典梳化、歷久常新的 Bell 茶几、球形燈具等，不同形態的線條碰撞出新鮮感。電視背牆鋪上海綿吸音牆紙，予牆身獨特的觸感；牆身橫跨客飯兩廳，中間隱藏了通往走廊的暗門，同時飾上金鋼，貫徹居室的主題。飯廳特別飾上意大利品牌 Fornasetti 的經典 Lina Cavalieri 肖像掛碟，讓整室洋溢獨具個性的優雅之感。

#### 「粉」飾空間

單位只有戶主夫婦二人及其初生嬰兒居住，因此原有的四房連工人房及儲物室間隔足夠有餘。設計師 Jacky 了解戶主的需要後，決定將原有的工人房改造成衣帽間，儲物室則用作存放女戶主的手袋，另外亦將其中一間睡房及主人套房打通，大大增加主人套房的面積。設計師將工人房改造成衣帽間之餘，亦將工人房的部份空間挪入廚房，讓廚房更為寬敞。衣帽間的設計一方為全身鏡，另一方是一列衣櫃，其中設計師特別將一部份設計為開放式，讓戶主回家時可暫時將衣物掛起通風。從衣帽間往外走就是手袋房，符合戶主的動線；手袋房特意用上玻璃間隔，亦於一邊牆身加設全身鏡，增加空間的視覺穿透感。主人房的特色之一無疑是其拱形的玻璃窗，設計師表示，這種設計除了能人享受遼闊的景色，空出的位置亦可設計成休憩區。於是設計師在這處擺放了一張休閒椅及茶几，讓睡房不只是睡眠區，同時可作休憩之用。細心留意，主人房亦充斥著 Fornasetti 裝飾，如休閒椅及床上的 cushion、床邊的床頭櫃，令設計主題更加鮮明。



#### Data

Location: Central Park, Tai Kok Tsui  
大角咀帝柏海灣  
Size: 1,006 sq.ft

#### Supplier List

Living & dining room : (sofa) Ligne Roset (lighting) Artemide (tv) Samsung (wall decor) Fornasetti Master bedroom and child's bedroom : (cabinet) Custom made by inT Design Furniture Limited (lighting) Artemide Kitchen: (electrical appliances) Miele

1. 設計師將工人房改造成衣帽間之餘，亦將工人房的部份空間挪入廚房，大大增加廚房的可用空間，更有空間擺放洗衣機。  
|| The design team began work by turning part of the maid's room into a walk-in closet and incorporated the remaining space into the kitchen.
2. 從衣帽間往外走就是手袋房，符合戶主的動線；手袋房特意用上玻璃間隔，亦於一邊牆身加設全身鏡，增加空間的視覺穿透感。  
|| Despite being only 1,000 square feet large, the apartment had an abundance of space, so the designer converted a storeroom into a display area for handbags.



Located in Tai Kok Tsui's Central Park residential development, this 1,000 square foot apartment plays home to a couple and their newborn baby. As such the owners were eager to introduce a slightly feminine and elegant interior design scheme that felt contemporary and en trend, but that could easily be adapted to meet the needs of their little one over the years. As such, Jackie Lee and the talented team from inT Design Furniture Limited set about transforming their home.

The original layout consisted of four bedrooms, the maid's quarters and a storeroom, however because only three people live in the property, the design team were afforded with an abundance of space with which to work. As a result, they began work by turning part of the maid's room into a walk-in closet and incorporated the remaining space into the kitchen. Then, the designer converted the storeroom into a display area for handbags, before combining one of the bedrooms into the en suite bathroom, in order to enlarge the space.

The lady of the house took charge when it came to the style of the interiors, which explains the delicate pink colour palette with soft grey undertones. This scheme extends throughout the apartment, right from the main living and dining room, which houses a pale grey contemporary Ligne Roset sofa, lighting from Artemide and decorative plates from Fornasetti that hang on the wall. The end result is soft yet inviting.

3. 兒童房的用家為新生嬰兒，因此房中沒有設置大型傢具，方便戶主日後因應孩子不同的成長階段添置傢具。  
|| Instead of featuring the same marble-topped bay window seen in each of the other rooms, the designer decided to create a warmer vibe in the nursery with a wooded bay window.
4. 書房主要是男戶主用，因此設計師在此希望將整室女性化的主題稍為轉移，用以淺木色及雲石，未會偏離設計主題，同時更富特色。  
|| The owners wanted a slightly feminine, elegant interior design scheme that could easily be adapted to meet the needs of their little one over the years.



1. 主人房充斥著 Fornasetti 裝飾，如休閒椅及床上的 cushion、床邊的床頭櫃，令設計主題更加鮮明。|| In the master bedroom, the arc-shaped window allowed the designer to add a reading area including an armchair with Fornasetti cushions and a small coffee table.

2. 床背們上粉紅色 cushion 布，且同樣飾以金鋼，貫徹整室主題。|| Continuing the understated pink and grey colour scheme found throughout the apartment, the master suite also features marble and gold steel accents.

3. 衣帽間的設計一方為全身鏡，另一方是一列衣櫃，其中設計師特別將一部份設計為開放式，讓戶主回家時可暫時將衣物掛起通風。|| Bright and airy, the cloakroom houses a full-length mirror on one side and a row of wardrobes on the other.

4. 因主人房不設衣櫃，因此可利用空間擴大主人套房，經擴大的主人套房現可容納一張梳妝檯。|| In order to create a larger more luxurious space, the design team also combined one of the bedrooms into the en suite bathroom.

5. 男女戶主每天早上預備上班時需要同時使用浴室，因此設計師特意設兩個洗手盆，並加長鏡檯，讓兩人一起使用時不覺壓迫。|| The end result is soft yet inviting, creating a high-end hotel-like ambience in the master en suite. 🏡

